



INHERITING FROM THE WORLD'S
LEADING TECHNOLOGY

1004NG POWER PACK

30 kWm 1500 rev/min
35 kWm 1800 rev/min
GENSET POWER

■ High Power Generating Quality

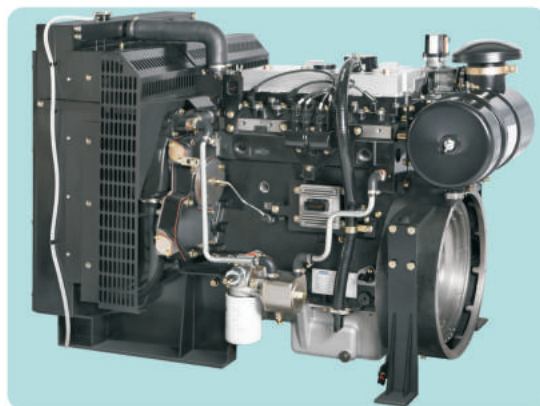
The stable power output and generating frequency can meet the requirements of G3 and G4 electricity quality.

■ Ultra-low fuel

Economy fueled by natural gas, more economy.

■ Small Vibration and Low Noise

Smoother combustion and lower vibration noise.



Speed (rev/min)	Type of operation	Engine Power	
		kWm	bhp
1500	prime power	30	40.2
	standby power	33	44.2
1800	prime power	35	46.9
	standby power	38	50.9



INHERITING FROM THE WORLD'S
LEADING TECHNOLOGY

Standard Specification

Air inlet
Mounted air filter

Fuel system
ECU control

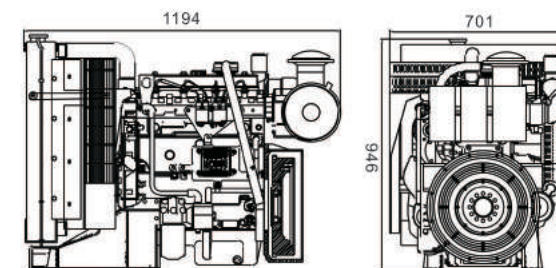
Lubrication system
Forged steel oil sump
Spin-on full flow oil filter
Oil cooler

Cooling system
Thermostat controlled cooling system with gear driven water pump
Radiator
20" belt-driven pusher fan and guards

Electrical system
12 volt starter motor and alternator

Flywheel and housing
High inertia flywheel, size: 10/11½
SAE3 flywheel housing

Mounting
Front engine mounting bracket



General Data

Cylinder number	4
Cylinder arrangement	Vertical in-line
Bore×stroke	100mm×127mm
Displacement	3.99 L
Induction	Naturally aspirated
Cycle	4-stroke
Compression ratio	10.3:1
Direction of rotation	Clockwise viewed from fan
Lub. system capacity	8.1
Coolant capacity (inc. radiator)	11.2
Overall dimensions L×W×H	1194mm×701mm×946mm
Dry weight	486.5 kg

Final weight and dimensions will depend on final specification.



TIANJIN LOVOL ENGINES CO., LTD.
77 Gaoxin Avenue, Beichen Hi-tech Industrial park, Beichen district, Tianjin.
Tel: +86(0)22 26899125/26996802
Fax: +86(0)22 86993260
Email: lovolengines@lovolengines.com
www.lovolengines.com

All information in this document is substantially correct at the time of printing and may be altered subsequently.

www.bineshebtakar.ir

Distributed by